

De l'Art Naïf à la Tapisserie Jacquard
From Folk Art to Jacquard Tapestry

I feel very fortunate to have a folk artist husband !
His production is all about birds, animals, pilgrims and even Angels , yes ANGELS
seen on the island where we live and share our summer boutique **À l'Ombre du vent** !

We are together kind of an ART'eam

I should also mention that I have two other partners in my team:
my Jacq3G AVL Loom and Arahne Software.

In August 2013, from the 10th to the 13th, I will have an open studio exhibition and demonstration of my hand jacquard weaving.

For this event, I am working on a serie of jacquard tapestries with the imagery of some of Yves's birds on the theme: « *À chacun son nid* » or « *To each its own nest* »

Here is the one «nesting» today on my loom (the sky is not finished yet):



It is a «*Perdrix*» «Partridge» stepping on the seagrass of the St Lawrence river shore down the road on our property

De l'Art Naïf à la Tapisserie Jacquard
From Folk Art to Jacquard Tapestry

The preparation of the image, what we call in french: « *le carton de tapisserie* » was made using two basics pictures:

1- a picture of Yves's sculpture



2- a picture I took down the road on our property on the shore of the St-Lawrence river



De l'Art Naïf à la Tapisserie Jacquard From Folk Art to Jacquard Tapestry

Here are the main steps for the preparation of the image:

- 1- Scale the shore picture to 712 x 712 pixels (my loom has 720 hooks, 8 are reserved for the selvages)
- 2- Roughly made 2 layers out of it, one for the sky



and one for the grass, because I wanted to be able to manipulate them separately with filter's and colour adjustment



De l'Art Naïf à la Tapisserie Jacquard
From Folk Art to Jacquard Tapestry

3: Clean the back ground and scale down the picture of the Partridge to comfortably install it on the path way



4: Flatten the image of the three layers and save the file to make a first «testing» Jacquard conversion with ArahWeave software

5- Also save a copy of each layers to open them and work on each separately in ArahPaint

ArahWeave software offers a fantastic tool, the «Color Shading option with Tapestry Weaves» . This is the technique I have chosen to work with.

It is very easy, fast and convenient to work in conjunction with ArahWeave and ArahPaint, both opened on the Linux platform.

I use the tools of ArahPaint for the contours, brushes, etc and for the colour reduction and adjustments to match the colours of the yarns available in my studio.

Each time I want to test a modification done on the image in ArahPaint, I only have to save the new image under a different version name as for example:

Perdrix 01, 02, 03 etc , leave the image visible on the screen

- toggle to ArahWeave and make a new jacquard conversion to evaluate the resulting fabric
- compare together side by side on the screen the image in ArahPaint and the fabric in ArahWeave
- Make some other wanted modifications in ArahPaint and test them again in a few seconds in Arah Weave

With some images, I sometime get over 20 versions of the same image before I make a final choice

De l'Art Naïf à la Tapisserie Jacquard
From Folk Art to Jacquard Tapestry

After multiple «essais/trials», here is the image I have chosen for this tapestry

You will notice, that the sky is very different, could have become water

The colors of the partridge and those of the grass are adjusted so the partridge stand more in contrast over the sea grass

Outlines have been added around the partridge to stand out against the background

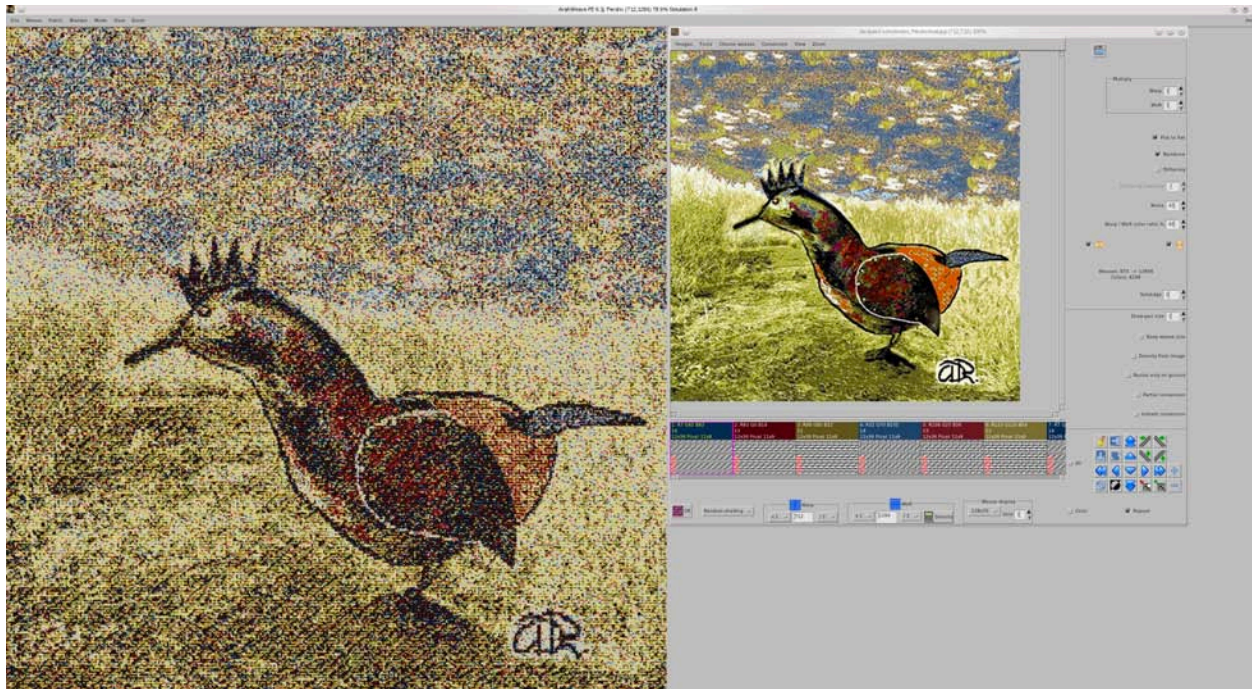
I have positioned the partridge just on the path

My signature also has been added



De l'Art Naïf à la Tapisserie Jacquard From Folk Art to Jacquard Tapestry

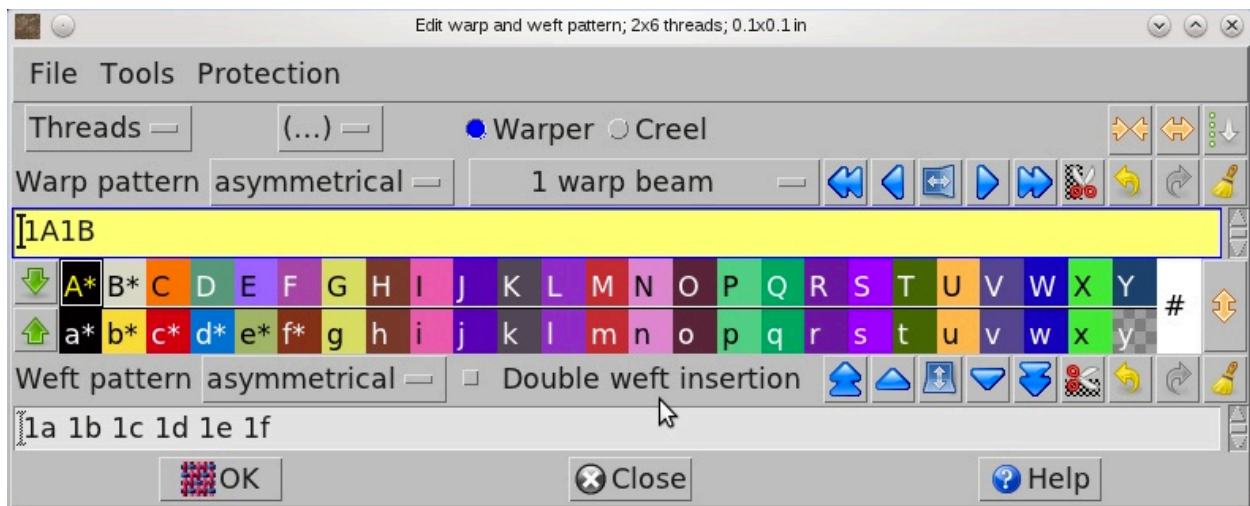
And now here is, with ArahWeave,
the resulting Fabric window on the left and Jacquard conversion window on the right:



My loom is set with 2 colors of mercerized coton 10/2 for the warp, one black and one light beige

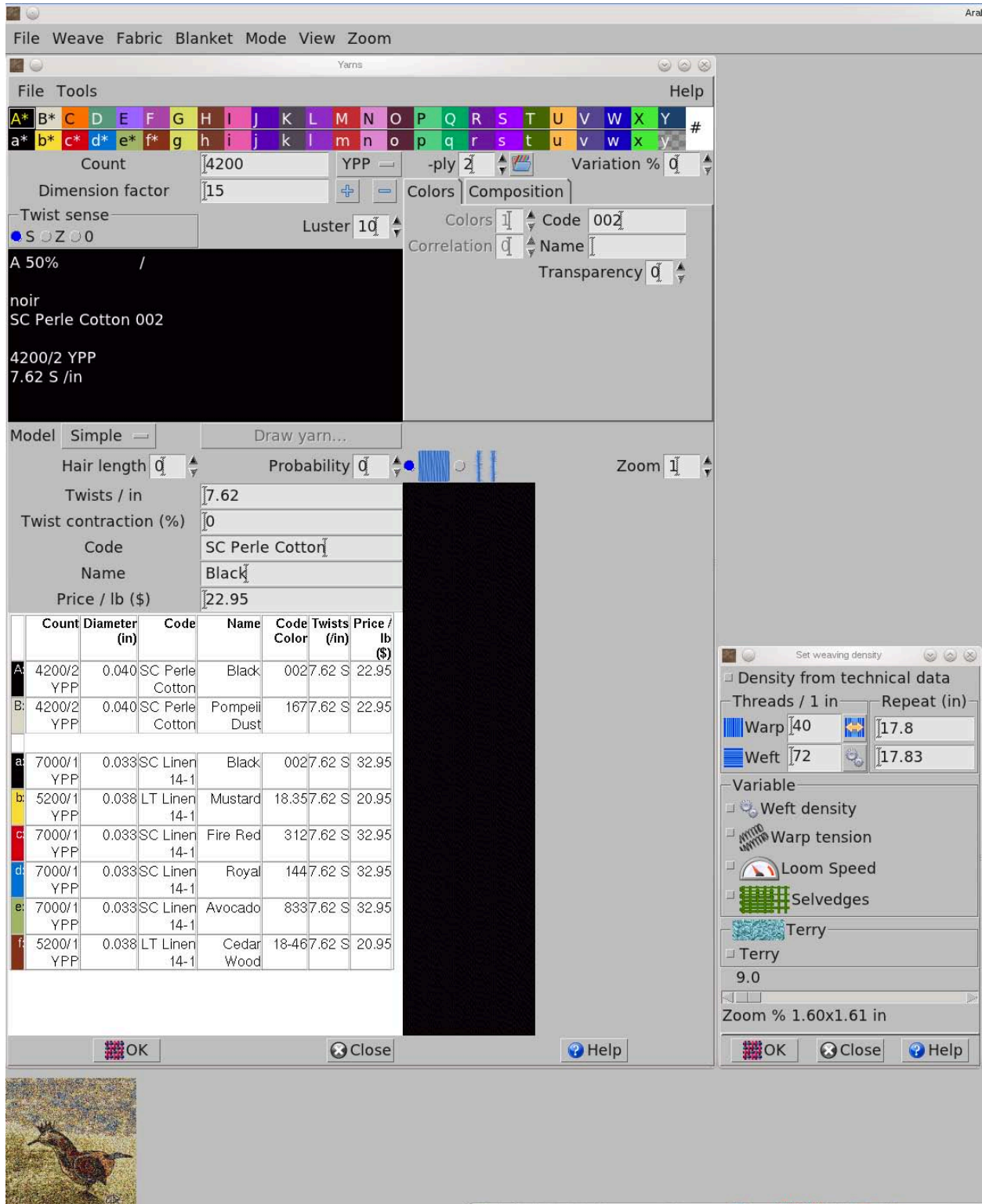
and I weave with six linen 14/1 colors for the weft :
black, yellow, red, blue, green and rust

Here is the Edit Warp and Weft pattern Window



De l'Art Naïf à la Tapisserie Jacquard From Folk Art to Jacquard Tapestry

the Yarns Window on the left with the Density Window on the bottom right

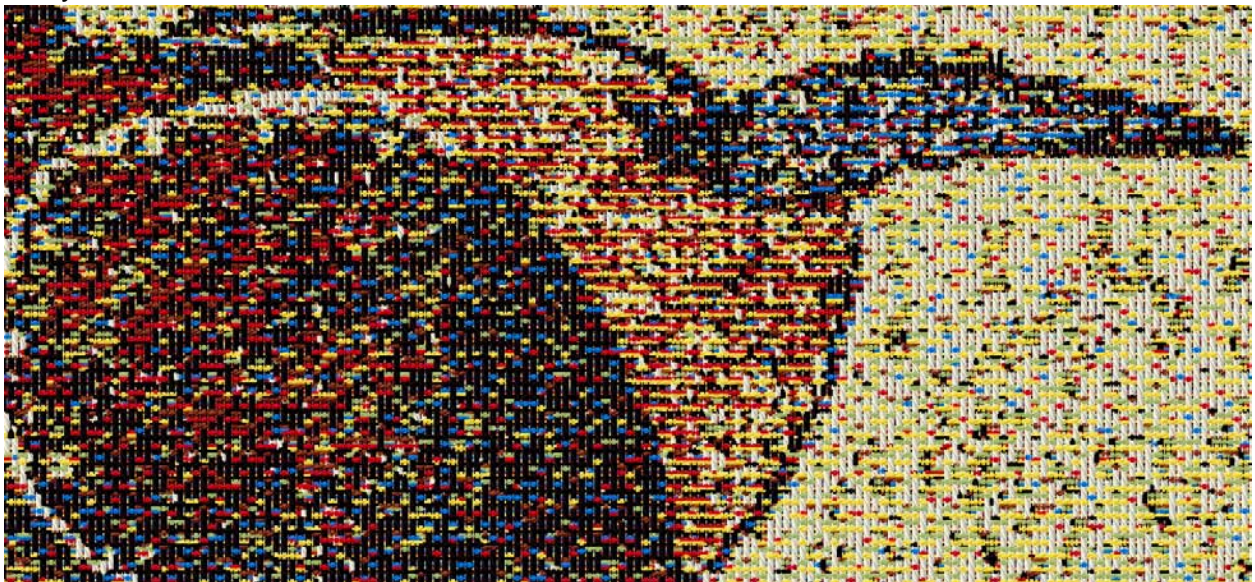


De l'Art Naïf à la Tapisserie Jacquard
From Folk Art to Jacquard Tapestry

and finally some close-up of the weaving:
Head



Body



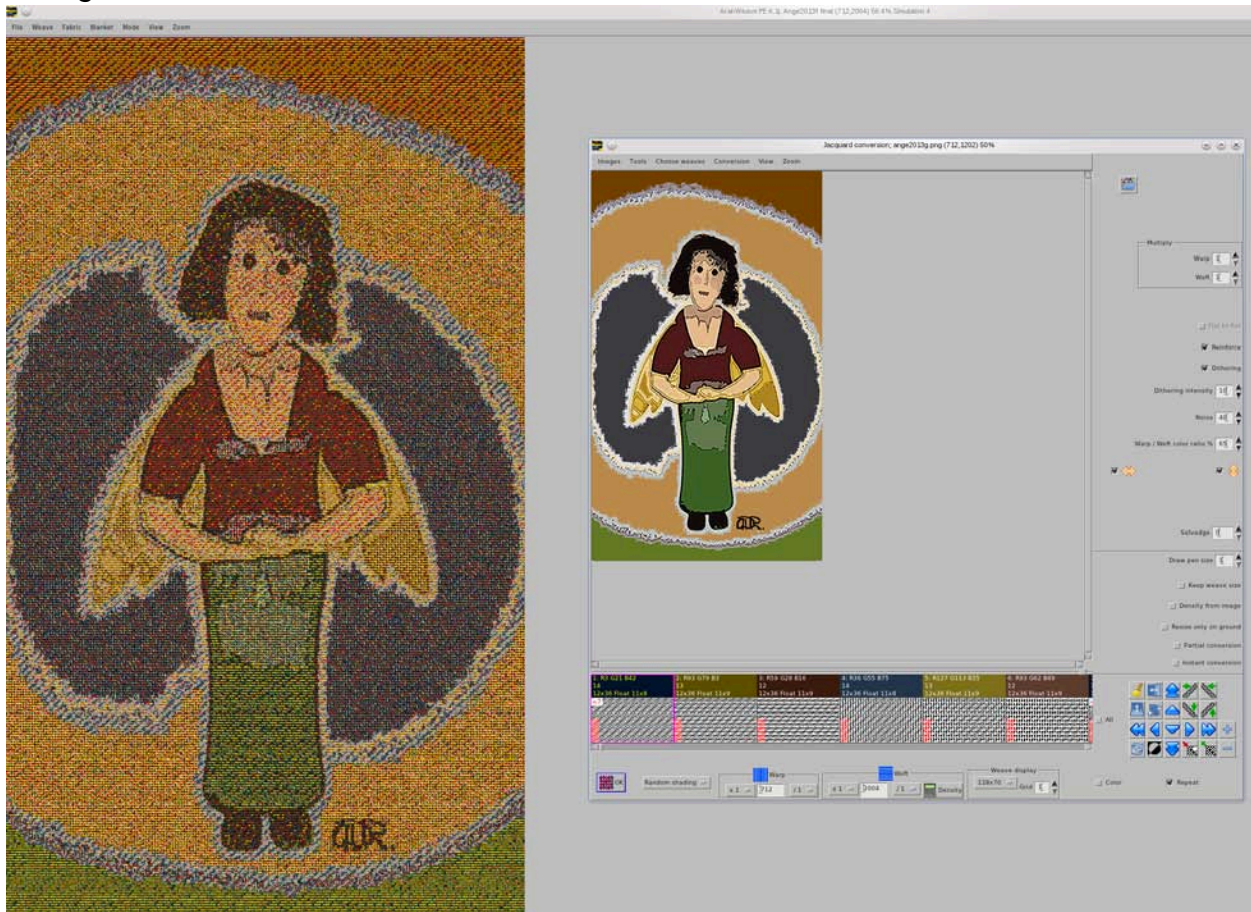
De l'Art Naïf à la Tapisserie Jacquard
From Folk Art to Jacquard Tapestry

Do you remember having read at the beginning of this article:
«His production is all about birds, animals, pilgrims and even Angels, yes Angels!!!!
seen on the island ...» *and did you beleive me ??????*
Well here is one of the Angels:



Picture of the sculpture /Yves Robitaille

The Tapestry fabric, on the left and the image in the Jacquard Conversion window on the right. Coton and Linen / Annette Duchesne Robitaille



De l'Art Naïf à la Tapisserie Jacquard
From Folk Art to Jacquard Tapestry

*Happy Jacquard Weaving to all of you !
from both of us ...*



and welcome in my studio in August or some other time.
173 chemin Royal
Saint-François-de-Île d'Orléans, Québec, Canada.

The triple «A» TEAM:

www.alombreduvent.ca www.avlusa.com www.arahne.si